

Why Can't Thomas Do Magic? Unlocking the Secret of His Inability



Why can't I by P. L. Thomas

★★★★☆ 4.2 out of 5

Language : English

File size : 190 KB

Text-to-Speech : Enabled

Enhanced typesetting : Enabled

Word Wise : Enabled

Print length : 22 pages

Lending : Enabled

Screen Reader : Supported



In the enchanting world of Sodor, where steam engines puff and whistle along the tracks, one beloved character stands out for his charming personality and heartwarming adventures: Thomas the Tank Engine.

While many of his fellow engines possess magical abilities, such as the ability to transform into robots or travel through time, Thomas remains an ordinary, yet extraordinary, tank engine. This begs the question: why can't Thomas do magic?

The Essence of Thomas: A Down-to-earth Hero

At the heart of Thomas's character is his unwavering determination and can-do spirit. He embraces the challenges of everyday life on the railway, relying on his wit and resourcefulness to overcome obstacles.

Unlike some of his more whimsical companions, Thomas represents the relatable qualities of perseverance, hard work, and kindness. His lack of magical abilities reinforces the message that ordinary individuals can achieve extraordinary things through determination and a positive attitude.



The Railway Series: A World of Realism

The Railway Series, the literary foundation of the Thomas & Friends franchise, was created by the Reverend W. Awdry with a focus on realism and practicality.

The engines in Sodor are depicted as working machines with specific roles and limitations. Thomas, as a tank engine, is primarily responsible for

shunting and switching cars, reflecting the practical nature of railway operations.

By eschewing magic, the Railway Series maintains a sense of authenticity and relatability. It encourages readers to appreciate the beauty of everyday life and the challenges of working together.

Character Development: Defining Limitations

In the world of storytelling, limitations play a crucial role in shaping character development. By giving Thomas the inability to do magic, the writers create a relatable and sympathetic figure.

Thomas's struggles and triumphs are more meaningful because they are grounded in the realm of the possible. He inspires children to embrace their own limitations and work hard to overcome them.

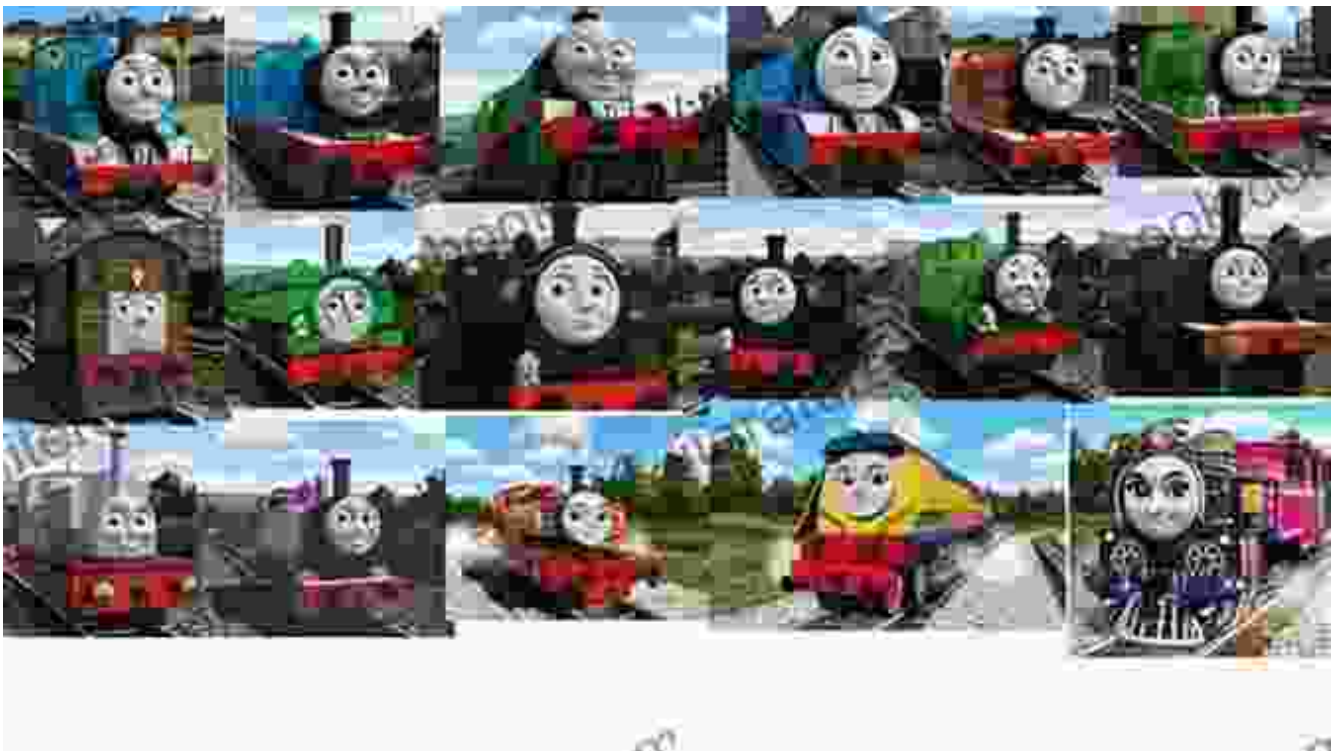


Thomas's inability to do magic emphasizes the importance of determination and overcoming limitations.

The Importance of Diversity

In a cast of characters with diverse abilities and personalities, Thomas's lack of magic contributes to the richness of the Sodor landscape.

His relatable qualities and unwavering determination serve as a reminder that everyone has their own unique strengths and weaknesses. By embracing diversity, the Railway Series promotes inclusivity and acceptance of differences.



: A Timeless Legacy

Thomas the Tank Engine's inability to do magic is an integral part of his enduring charm and relatability. It reflects the values of determination, hard work, and kindness that resonate with audiences worldwide.

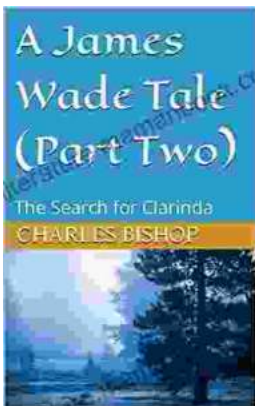
In a world where magic and imagination coexist, Thomas represents the power of ordinary people to achieve extraordinary things. His story continues to inspire generations, reminding us that the greatest magic lies in the human spirit.



Why can't I by P. L. Thomas

★★★★☆ 4.2 out of 5

- Language : English
- File size : 190 KB
- Text-to-Speech : Enabled
- Enhanced typesetting : Enabled
- Word Wise : Enabled
- Print length : 22 pages
- Lending : Enabled
- Screen Reader : Supported



James Wade's Captivating Tale: Delving into the Second Chapter

In the heart of a realm where the veil between reality and imagination blurs, we embark once more on the extraordinary journey of James Wade. Having escaped the clutches of...



The Heart Wrenching Gripping Story Of Mother Daughter Bond That Could Not Be

The bond between a mother and daughter is one of the most powerful and enduring bonds in the world. It is a bond that is forged in love and...